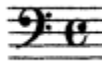


Orchestral Suite No. 1
Overture (at measure 20 and 49)

Johann Sebastian Bach

One bassoon, mm. ♩=92



Excerpt 1

Excerpt 1 consists of four staves of music in bass clef with a common time signature. The first staff (measure 17) begins with a triplet of eighth notes. The second staff (measure 28) features a key signature change to one flat. The third staff (measure 26) is marked 'Solo' and contains a complex rhythmic pattern. The fourth staff (measure 29) continues the solo passage.

Excerpt 2 (m. 49)

Excerpt 2 consists of seven staves of music in bass clef with a common time signature. The first staff (measure 49) shows a key signature change to one sharp. The second staff (measure 51) continues the melodic line. The third staff (measure 54) is marked '[Solo]'. The fourth staff (measure 57) continues the solo. The fifth staff (measure 60) features a complex rhythmic pattern. The sixth staff (measure 63) continues the solo. The seventh staff (measure 67) is marked 'Tutti' and contains a key signature change to one flat. The eighth staff (measure 71) ends with a final note.